

Content

1. Safety instruction 1

2. Introduction: Intended use 2

 2.1. Mounting of the external condensate trap 2

 2.2. Installation of the mounting panel 3

 2.3. Exchanging the filter element 3

1. Safety instruction

▲ DANGER



Risk due to biogas

There is a risk of poisoning.
Biogas may be pressurized and may escape unnoticed from the condensate trap.

- ▶ Only use the analyzer in well ventilated areas.

▲ CAUTION



Risk of electric shock from the power system

This may result in severe injuries or death.

- ▶ Disconnect the device from the power supply before doing maintenance work.
- ▶ Check that the system is deenergized.

▲ CAUTION



Acid from the condensate

Acid burns may result from weakly acidic liquids.

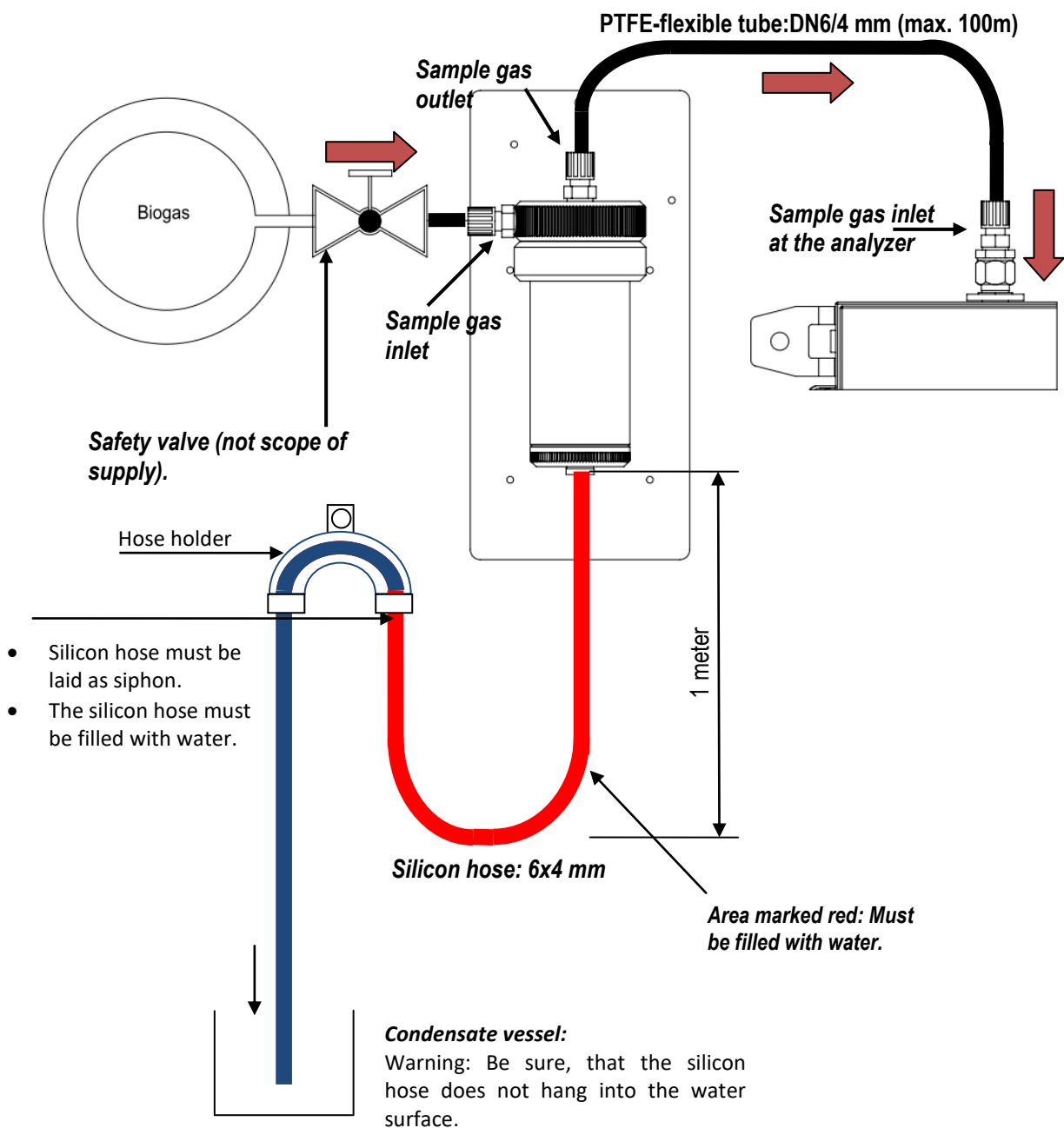
- ▶ Upon coming in contact with acid, rinse these areas immediately and thoroughly with plenty of water.

2. Introduction: Intended use

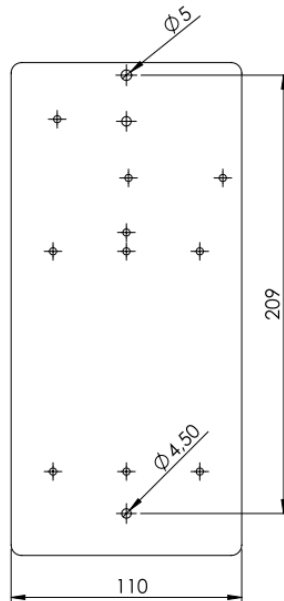
The external condensate trap is a pre-filter unit, which is for wet and dirty sampling points with condensate higher than 14ml/min.

2.1. Mounting of the external condensate trap

The schematic above shows the tubing of the external condensate trap:



2.2. Installation of the mounting panel



2.3. Exchanging the filter element

1. Close the safety valve at the gas inlet.

⚠ CAUTION



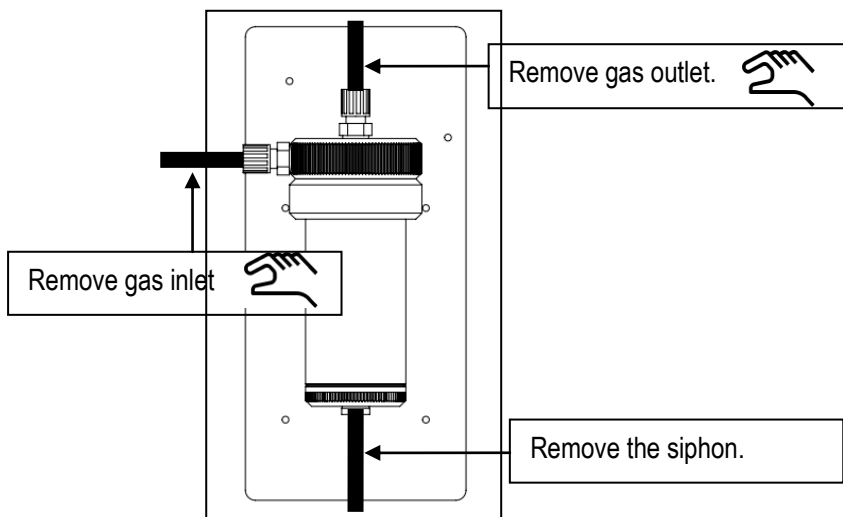
Risk of negative pressure inside the system.

The following order must be considered:

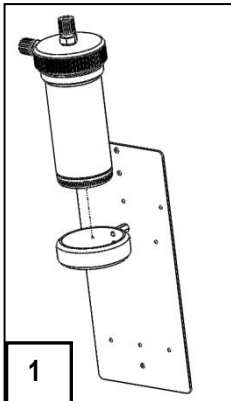
- ▶ Shut the system down.
- ▶ Close the safety valve at the gas inlet.

This will prevent the build-up of negative pressure.

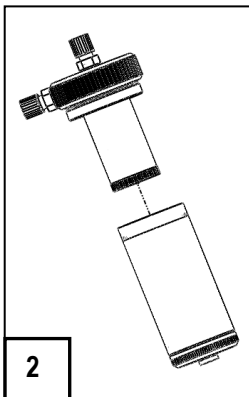
2. Remove sample gas inlet and sample gas outlet from the condensate trap. Remove the silicon hose, which builds the siphon.



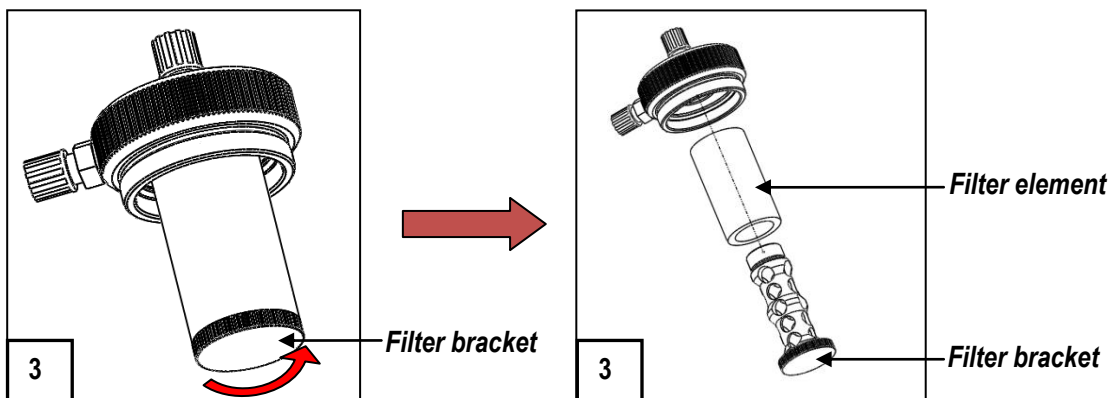
3. Remove the filter unit from the retention fixture (see picture 1).



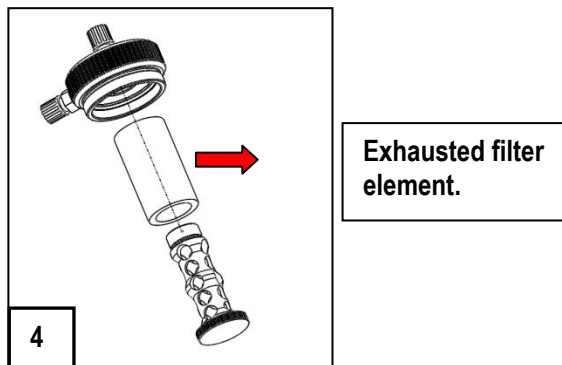
4. Unscrew the filter the side glass from the external condensate trap (see picture 2).



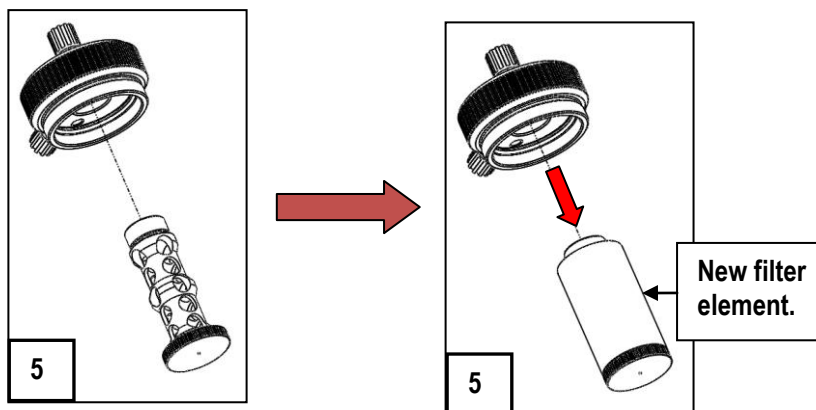
5. Unscrew the filter bracket (see picture 3).



6. Delete the exhausted filter and exchange it with a new one (see picture 4).



7. Screw the filter bracket back in the filter unit (see picture 5).



8. Screw the side glass back in the filter-unit.

Unscrew filter holding and remove exhausted filter element. Replace the filter element by a new one (**pictures: 1-5**).